

MANUAL FOR MATLAB INSTALLATION/ACTIVATION (Year 2018-19)

MANUAL CONTENTS: -

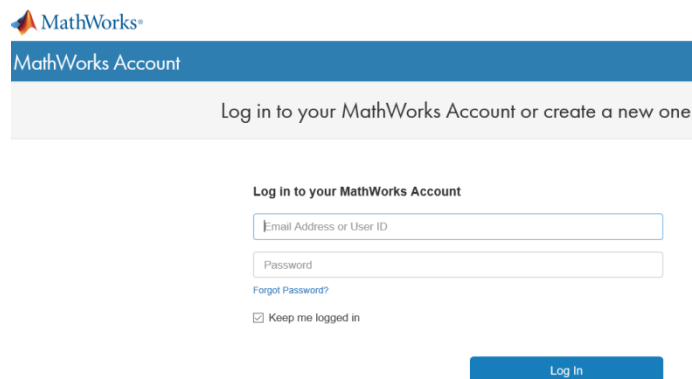
- A. CREATING ACCOUNT WITH MATHWORKS
- B. ACTIVATING MATLAB (Fresh or Existing MATLAB)
- C. ADDITIONAL MATLAB RESOURCES

Please, get a copy of MATLAB setup from CITM, First Floor, A-Block. The size of MATLAB with all tool boxes is 10GB approx. During installation, you will get the MATLAB activate window. You need to follow the following procedure to activate MATLAB. Open <https://www.mathworks.com/academia/tah-portal/thapar-institute-of-engineering-and-technology-40604939.html>

A. CREATING ACCOUNT WITH MATHWORKS.

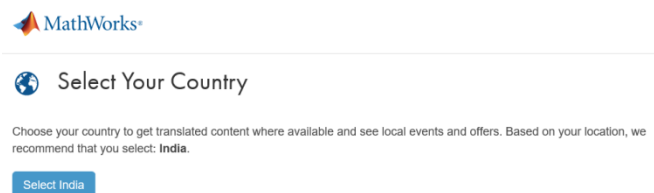
Firstly, you need to register on MATHWORKS for license activation with email_id@thapar.edu. Only email id with @thapar.edu are able to activate the MATLAB with University MATLAB License.

1. Open <https://www.mathworks.com/academia/tah-portal/thapar-institute-of-engineering-and-technology-40604939.html> OR <https://in.mathworks.com> in web browser
2. Click on **Log In**



Don't have a MathWorks Account? [Create Account](#)

3. After clicking on Create Account you will get the following Screen and **Choose your country: India**



4. Here, it will ask for following information:
 - a. Email Address: Should be on **Thapar Domain** (email_id@thapar.edu)
 - b. Country: **India**

- c. How will you use Mathworks Software? :
- i. For (Ph.D./Faculty/Staff or any other researcher) select: **“Teaching or Research in School”**
 - Or
 - ii. For Students (ME/Mtech/MSc/MBA/BE/BTech) select: **“Student Use”**

MathWorks Account Search MathWorks.com

Create MathWorks Account

Email Address ✔
You will need to verify your email address

Country/Region

How will you use MathWorks software?
 Commercial work (including research)
 Government work (including research)
 Personal, non-commercial projects
 Teaching or research in school
 Student use

Are you at least 13 years or older?

d. And Are you at least 13 year or Older? : Yes

5. Submit all the details by pressing Create Button
6. You will get a verification email on your email_id@thapar.edu.
7. Click on verification button in your email and you will get the following screen to create your profile account with MATHWORKS.

To finish creating your profile, provide the following information for aeiman@thapar.edu

First Name ✔

Last Name ✔

User ID (Optional)
Must include 6 to 16 alphanumeric characters and start with a letter (Example: jsmith555) [Learn more](#)

Password ✔

Password Confirmation ✔

What describes your role?

Department

Associate Your Account to a License

If you have MATLAB already, enter your activation key or license number here. [What will this allow me to do?](#)

Activation Key or License Number (Optional)
Type 'license' at the MATLAB prompt to get your license number or get an activation key from your MATLAB administrator.

I want a sales representative to contact me

We will not sell or rent your personal contact information. See our [privacy policy](#) for details.

B. ACTIVATING MATLAB

You can activate MATLAB during installation or later.

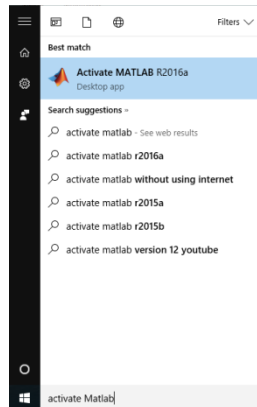
The steps are same for new installation or activation of already installed MATLAB.

Activation of Already Installed MATLAB use following command or Search for “Activate Matlab”

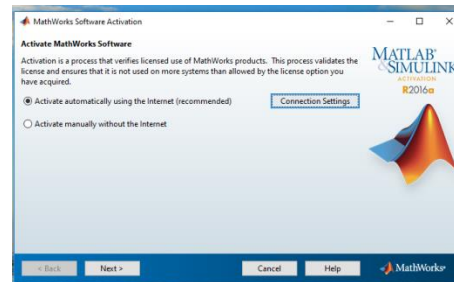
Run the Command "C:\Program Files\MATLAB\R2015b\bin\win32\activate_matlab.exe"

Or

Press Windows Search Button at command prompt "Activate Matlab" string.



1. After running the Activate MATLAB or during fresh installation of MATLAB, you will get following window.



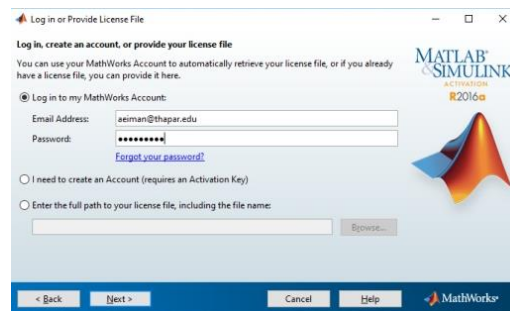
Click on **Activate automatically using Internet recommended** Then Click **Next** button.

2. Here, it will ask for username and password.

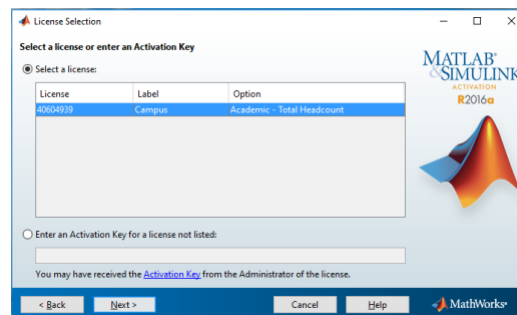
Username: Enter your email_id@thapar.edu

Password: Password as per MATHWORKS user account.

As mentioned in the following window

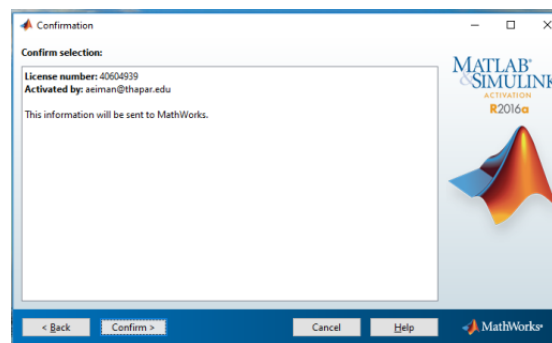


3. Press next button. You will get the following window for license details. The license number may be different.

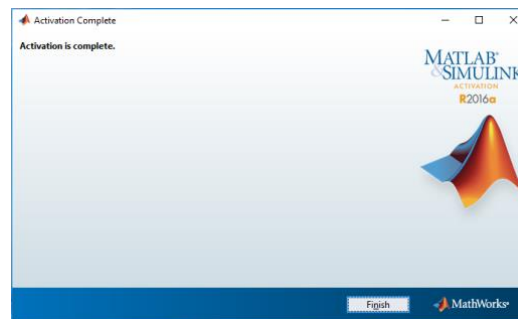


4. Select your license and click next. The following confirmation window will appear. **Press Confirm.**

Note: While clicking on confirmation, you are certifying that you are a Student/Faculty/Staff/Researcher of Thapar Institute of Engineering and Technology with email_id emial_id@thapar.edu and using MATLAB for teaching and research in Thapar University.



5. Finally, you will get the following window and your MATLAB activation is complete.



C. ADDITIONAL MATLAB RESOURCES

Use MATLAB Portal to access additional Resources are also available at <https://www.mathworks.com/academia/thapar-portal/thapar-institute-of-engineering-and-technology-40604939.html>

Login using Usrename@thapar.edu on above portal see ongoing resource.

1. **MATLAB Training-** links to MATLAB Onramp (free 2-hour overview of MATLAB) and other course offerings.
2. **MATLAB Help-** Provides links to installation support, product videos, code example, answers, and consultation support from a MATHWORKS Engineers.
3. **Use MATLAB on the Cloud-** Access to MATLAB Online (web based version of MATLAB), MATLAB Drive and MATLAB Mobile.
4. **Resources for Educators-** Instant access to free courseware, webinars, and other tools to integrate MATLAB and Simulink into your curriculum.

Note: Any violation or misuse of license will lead to action by INSTITUTE or MATHWORKS.

If you find any issue in activating of MATLAB contact the following:
CITM Office, 1st Floor A-Block, TIET.