

Student 2.0: A Transformative Journey from Traditional Learning to Experiential Learning

Anuradha Thakur, Jayendra Barua, Rajnish Mallick and Robin Singla
LM Thapar School Of Management, Dera Bassi Campus
Thapar Institute of Engineering and Technology Patiala, Punjab, India.

AIM

Enhancing Students learning through exposure to real-time practical problems augmenting classroom learning to transform their learning from teacher-centric to Student-Centric Learning (SCL). Focusing self-directed, experiential and flexible learning.

OBJECTIVES

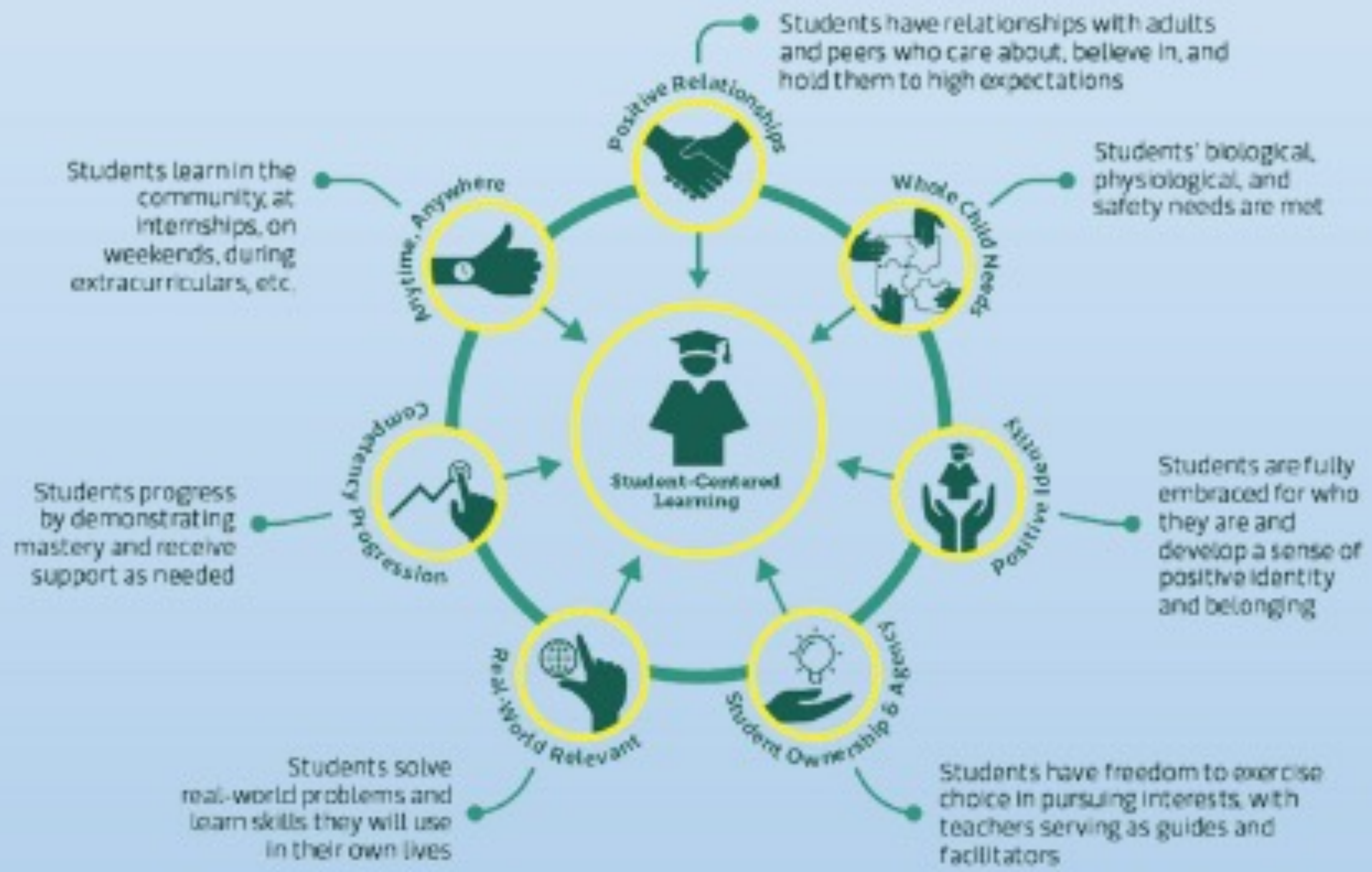
- Design the student-focused learning path
- Identify and relate to a real-time problem.
- Develop critical thinking and develop requisite industry-relevant skills & competencies.
- Design solutions through collaborative problem-solving.
- Focus on personality development

OVERVIEW

- Promoting group work (Think-Pair-Share)
- Student involvement in creating learning goals
- Deliver research projects relevant to industry requirements demonstrating the learnings acquired in their curriculum

IMPACTS

- Students build a contented personal brand and develop a leadership personality.
- Students exhibit confident and empathetic, technical & leadership skills
- The experiential learning interventions in the SCL assist students in honing their critical thinking.
- Ability to learn from failures and take responsibility.



- Students identify real-world problems and demonstrate industry-grade solutions
- Develop a pragmatic approach to solving scientific problems and developing products & solutions which have industry orientation and societal relevance
- Develop a collaborating attitude to deliver solutions in multidisciplinary teams

“Action without study is fatal. Study without action is futile

So keep learning and spread the sunshine of knowledge with SCL to develop next-generation leaders!



CONTACTS

- Dr. Anuradha Thakur
- Dr. Jayendra Barua
- Dr. Rajnish Mallick
- Dr. Robin Singla

REFERENCES

- Kaput, K., 2018. Evidence for Student-Centered Learning. Education evolving.
- Estes, C.A., 2004. Promoting student-centred learning in experiential education. Journal of Experiential Education, 27(2), pp.141-160.
- Murphy, E.J., 2007. Prior Learning Assessment: A review of Bloom's taxonomy and Kolb's theory of experiential learning: Practical uses for prior learning assessment. The Journal of Continuing Higher Education, 55(3), pp.64-66.